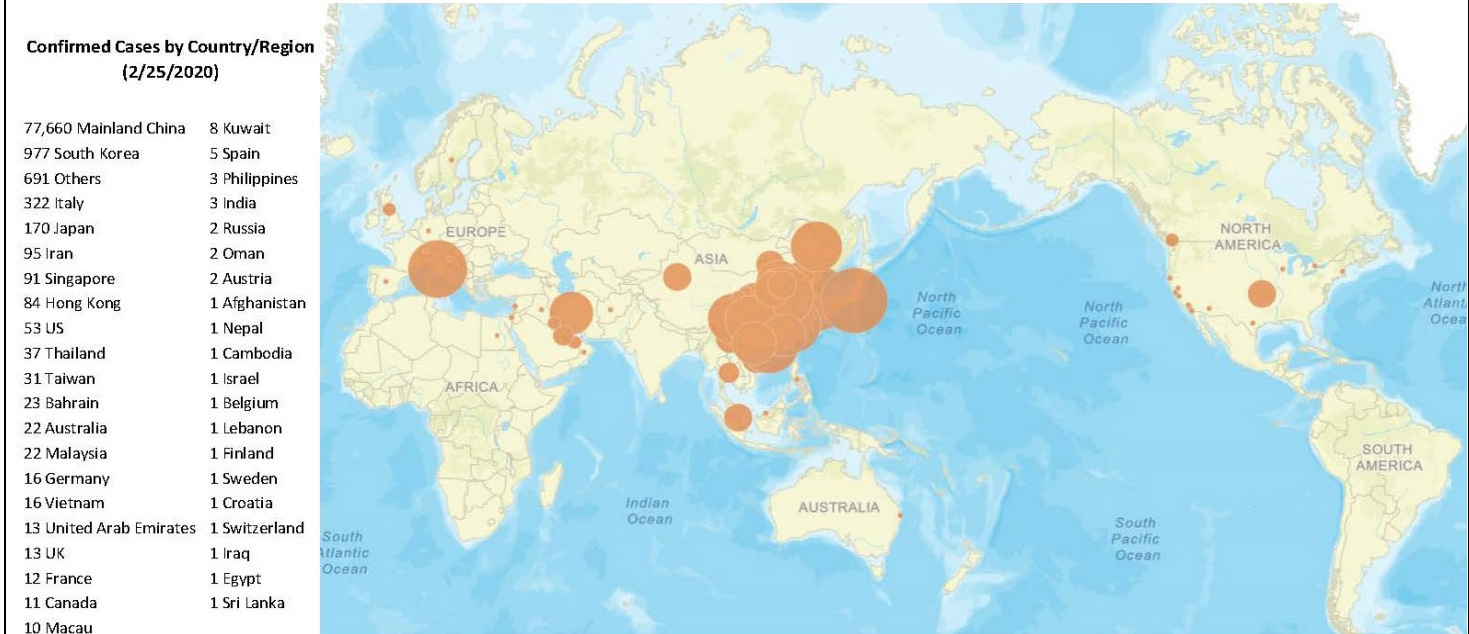


1. Incident Name: COVID-19	2. Operational Period: Date From: February 25, 2020 Date To: March 2, 2020
-----------------------------------	--




3. Map



Source: Johns Hopkins University, Center for Systems Science and Engineering (CSSE)
<https://gisanddata.maps.arcgis.com/apps/opsdashboard/index.html#/bda7594740fd40299423467b48e9ecf6>

As of February 25, 2020:

- 80,413 reported cases world-wide
- 77,660, or 96.6%, of cases are in Mainland China
- 81% of cases are in Hubei Province
- 2,708 reported deaths world-wide
- 53 confirmed cases in the US (including 36 cases from the Diamond Princess cruise ship)
- No deaths in the U.S.
- No cases in Utah

Prepared by:  Michelle Hale (Feb 26, 2020)	Approved by:  Cindy Lewis Burnett (Feb 26, 2020)	 Robyn Atkinson (Feb 26, 2020)
Date: February 25, 2020	Date: 02/26/2020	02/26/2020

4. Situation Summary

UDOH is closely monitoring an outbreak of COVID-19, a respiratory disease caused by a novel coronavirus, that was first detected in Wuhan City, Hubei Province, China and which continues to expand. Chinese health officials have reported thousands of infections with COVID-19 in China, with the virus reportedly spreading from person-to-person in many parts of that country. Infections with COVID-19, most of them associated with travel from Wuhan, also are being reported in a growing number of international locations, including the United States. Some person-to-person spread of this virus outside China has been detected. The United States reported the first confirmed instance of person-to-person spread with this virus on January 30, 2020.

The World Health Organization (WHO) declared the outbreak a Public Health Emergency of International Concern (PHEIC) on January 30, 2020.

The U.S. Department of Health and Human Services declared a public health emergency on January 31, 2020. Effective February 2, 2020 at 5pm, the U.S. government suspended entry of foreign nationals who have been in China within the past 14 days. U.S. citizens, residents and their immediate family members who have been in Hubei province and other parts of mainland China are allowed to enter the United States, but they are subject to health monitoring and possible quarantine for up to 14 days. The U.S. Department of State has facilitated three flights from Wuhan and two flights from Tokyo, to evacuate 328 passengers from the Diamond Princess cruise ship, to the United States. These individuals have been quarantined, by order of HHS, at one of six military air bases for fourteen days. Individuals who have tested positive for COVID-19 have been isolated and receiving medical care.

Due to the recent increase of COVID-19 cases in other countries, the CDC has issued the following [travel guidance](#):

Level 3, Avoid Nonessential Travel – China (2/22) and South Korea (2/24)

Level 2, Practice Enhanced Precautions – Japan (2/22), Iran (2/23), and Italy (2/23)

Level 1, Practice Usual Precautions – Hong Kong (2/19)

5. UDOH Objectives

1. UDOH will share situational awareness and technical guidance with appropriate stakeholders.
2. Epi, UPHL, and EMSP will develop and provide up-to-date guidance for the public, healthcare providers, local health departments, laboratories, EMS and other first responders.
3. Epi will coordinate PUI investigations with healthcare providers and local public health.
4. UPHL will facilitate laboratory sample collection, shipping, and testing for COVID-19.
5. EMSP will provide guidance to healthcare facilities on contingency and crisis strategies in the event of a patient surge.

6. Planned Actions and Strategies

- 1a. UDOH will disseminate information internally and externally in a coordinated manner: Distribution of general information will be sent by the UDOH Planning Chief to all coordination partners.
Function specific guidance will be distributed as follows:
 - Epi DREAM program → to the LHD Epi Affiliates.
 - EMSP Preparedness program → to Emergency Response Coordinators, Healthcare Coalition Coordinators, EMS, PSAPs and healthcare associations.
 - UDOH Tribal Liaison → to tribal partners.
 - Epi HAI program → to healthcare infection preventionists.
 - UPHL → to clinical laboratories
 - UDOH OPIM → general public
- 1b. The UDOH ICS team will conduct a weekly coordination meeting with stakeholders; scheduled for Tuesdays at 10:00am.
- 1c. UDOH and LHDs are recommended to track staff hours and other expenses generated by the COVID-19 response. The CDC PHEP grant will provide expedited funding redirect approval. And in case public health emergency funding is made available, expenses may be reimbursed retroactively.
- 2a. CDC is developing and updating guidance as the situation evolves and more information about the disease is learned. A reference of latest guidance will be attached to this report. UDOH will evaluate the guidance to consider development of simple tools for healthcare and public health partners. To facilitate access, the latest CDC and UDOH guidance will be linked on the UDOH website at <https://health.utah.gov/coronavirus>
- 2b. Public communication products will be evaluated for accessibility by populations with access and functional needs. UDOH has identified a language translation service and an on-call interpreter. LHDs may utilize this service. Translation of public materials in to Spanish is currently under way.
- 2c. Ops Comm will develop a script for Poison Control in the event they are used as a hotline service. The UDOH COVID-19 webpages will be updated and tailored to meet LHD, healthcare provider, and general public needs. (NEW)
- 2d. The OPIM will develop a weekly message and conduct a news conference (scheduled for 2/27/20), in partnership with hospitals, to educate about public health and healthcare preparedness efforts. (NEW)
- 3a. DREAM will coordinate with LHDs and hospitals to evaluate possible PUI, following CDCs latest guidance. Modified guidance is under consideration in response to the recent uptick in cases in countries other than China. (NEW)
- 3b. DREAM will continue to coordinate with LHD Epis on notification of cases that may require active monitoring and reporting case status.
- 4a. UPHL has received a test kit from the CDC but testing has been delayed indefinitely until receipt of new test components that CDC is developing.
- 4b. UPHL will investigate other methods to develop COVID-19 testing capability. (NEW)
- 5a. Preparedness will develop technical guidance on the use of ECUs and post on the BEMSP resource webpage: <https://bemsp.utah.gov/operations-and-response/response-resources/healthmedical-logistics/>
- 5b. Preparedness will continue to conduct weekly hospital capability/capacity surveys via UHRMS.
- 5c. Preparedness will develop a hospital situational awareness tool in case of patient surge.
- 5d. Preparedness will convene the UHA CSC Workgroup to evaluate the current Crisis Standards of Care (CSC) guidance against CDC COVID-19 guidance and modify as needed. Webinars and training videos

to provide strategies for hospitals to manage contingency and crisis care will be developed. (NEW)

5e. Preparedness is collaborating with three of the major healthcare supply chains and a central pharmacist to assess supply chain, stresses, and develop contingency strategies.

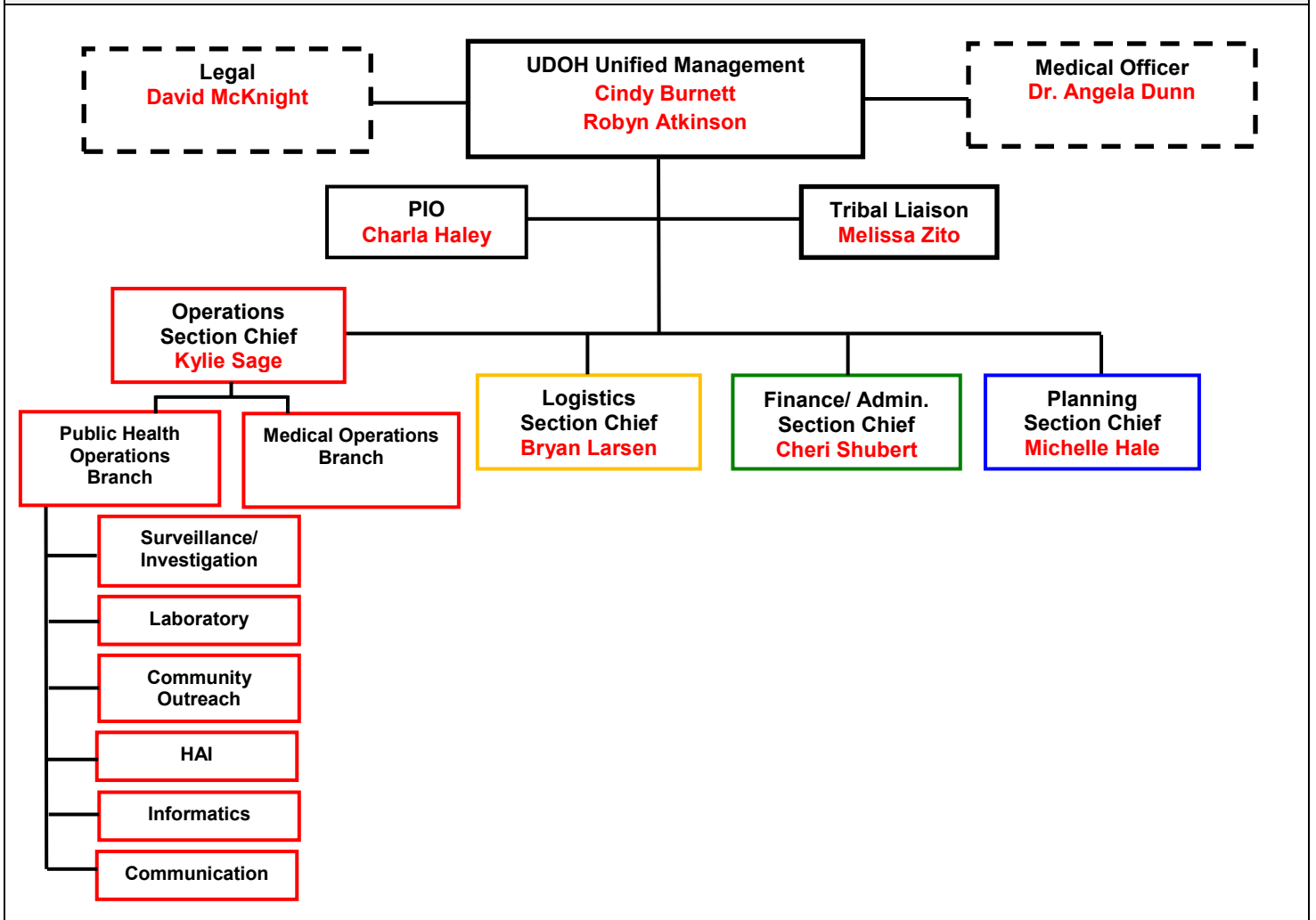
5g. Preparedness will develop quick reference guidance for EMS and public safety.

5h. Preparedness will develop hospital surge planning guidance based on CDC's recommendations. (NEW)

7. Organization Assignment List

Command Staff:		Community Outreach	Nathaniel Lewis
Co-Incident Manager	Cindy Burnett	Informatics	Jason Barnes
Co-Incident Manager	Robyn Atkinson		Rachelle Boulton
Medical Officer	Dr. Angela Dunn	HAI	Allyn Nakashima
PIO	Charla Haley		April Clements
Tribal Liaison	Melissa Zito	Ops Communication	Becky Ward
Agency Representative	David McKnight (AG)	Logistics Section:	
Operations Section:		Section Chief	Bryan Larsen
Section Chief	Kylie Sage	Medical Countermeasures	Russ Pierson
Medical Branch		Financial Section:	
Branch Director	Kevin McCulley	Section Chief	Cheri Shubert
Public Health Branch		Planning Section:	
Surveillance/Investigation	Bree Barbeau	Section Chief	Michelle Hale
Laboratory	Robyn Atkinson		

8. UDOH Operations Center Organization



9. Current Guidance and Resources

(This list is to serve as a reference of previously released resources. New guidance will be distributed to stakeholders as it comes available)

<i>Guidance/Resource</i>	<i>Updated</i>	<i>Location</i>
UDOH COVID-19 Website	ongoing	https://health.utah.gov/coronavirus
CDC COVID-19 Website	ongoing	https://www.cdc.gov/coronavirus/2019-ncov/index.html
ASPR EMS Infectious Disease Playbook (see Special Respiratory Precautions)	2018	https://site.utah.gov/bemsp/wp-content/uploads/sites/34/2019/01/aspr-tracie-EMS-Infectious-Disease-Playbook.pdf
Healthcare Providers Preparedness Checklist	2/21/2020	https://www.cdc.gov/coronavirus/2019-ncov/hcp/hcp-personnel-checklist.html
Hospital Preparedness Tool	2/14/2020	https://www.cdc.gov/coronavirus/2019-ncov/hcp/hcp-hospital-checklist.html
Clinical Care Guidance	2/12/2020	https://www.cdc.gov/coronavirus/2019-ncov/hcp/clinical-guidance-management-patients.html
Home Care Guidance	2/12/2020	https://www.cdc.gov/coronavirus/2019-ncov/hcp/guidance-home-care.html
CDC HAN-427 – Updated Guidance and Flowchart	2/1/2020	https://emergency.cdc.gov/han/han00427.asp
CDC Flowchart to Identify and Assess 2019-nCoV	2/1/2020	https://health.utah.gov/wp-content/uploads/nCoV-Identify-Assess-Flowchart_02-01-20.pdf
Evaluating and Reporting PUI	2/13/2020	https://www.cdc.gov/coronavirus/2019-nCoV/hcp/clinical-criteria.html
Guidelines for Clinical Specimens	2/14/2020	https://www.cdc.gov/coronavirus/2019-nCoV/lab/guidelines-clinical-specimens.html
UPHL Interim Guidelines for Clinical Specimens for PUI	1/23/2020	https://uphl.utah.gov/wp-content/uploads/UPHL-Interim-Guidance-2019-nCoV-1-23-20.pdf
Lab Biosafety Guidelines	2/10/2020	https://www.cdc.gov/coronavirus/2019-nCoV/lab/lab-biosafety-guidelines.html
Healthcare Infection Control Guidance	2/21/2020	https://www.cdc.gov/coronavirus/2019-nCoV/hcp/infection-control.html
Risk Assessment and Management	2/8/2020	https://www.cdc.gov/coronavirus/2019-ncov/php/risk-assessment.html
Interim Guidance for EMS	2/15/2020	https://www.cdc.gov/coronavirus/2019-ncov/hcp/guidance-for-ems.html
Healthcare Personnel w/ Potential Exposure to COVID-19	2/25/2020	https://www.cdc.gov/coronavirus/2019-ncov/hcp/guidance-risk-assesment-hcp.html

Information for Businesses	2/24/2020	https://www.cdc.gov/coronavirus/2019-ncov/guidance-business-response.html
Disposition of Hospitalized Patients w/ COVID-19	2/16/2020	https://www.cdc.gov/coronavirus/2019-ncov/hcp/disposition-hospitalized-patients.html
Discontinuation of In-Home Isolation for Patients w/ COVID-19	2/16/2020	https://www.cdc.gov/coronavirus/2019-ncov/hcp/disposition-in-home-patients.html
Healthcare Supply of PPE	2/18/2020	https://www.cdc.gov/coronavirus/2019-ncov/hcp/healthcare-supply-ppe.html
Stigma Related to COVID-19 (NEW)	2/21/2020	https://www.cdc.gov/coronavirus/2019-ncov/about/related-stigma.html
Information on COVID-19 and Pregnant Women and Children (NEW)	2/24/2020	https://www.cdc.gov/coronavirus/2019-ncov/specific-groups/pregnant-women.html
Pandemic Preparedness Resources	2/15/2020	https://www.cdc.gov/coronavirus/2019-ncov/php/pandemic-preparedness-resources.html